

Advance Works for Aotea Station on Albert Street on the block between Victoria and Wellesley Streets will start in January 2018. These works, comprising the cut back of some building canopies and relocation of underground services that are in the way of the piling for the western wall of the station, are scheduled to finish in April 2019 before the main tunnel and station works start.

## KEY TIMINGS



## KEY IMPACTS

### Bus re-routing and temporary traffic management

The buses usually stopping between Wellesley and Victoria Streets will be rerouted to Mayoral Drive and Victoria St. While the two western lanes of Albert Street will be closed to traffic, a single lane will be maintained in each direction. Left and right turns will be maintained in all directions at the Victoria and Wellesley Street intersections and at all vehicle entrances on both sides of Albert Street.

### Removal of canopies

From mid-January, parts of the Auckland Council, Sky City and Manhattan Building canopies, and the canopy and entrance portico at the AA building will be dismantled and removed. The works will require scaffolding on the footpath and pedestrians will be re-routed, either into the buildings' undercrofts or into a container walkway. Access to all buildings will be maintained, although work directly above an entrance, will require its temporary closure for safety reasons. This will be kept to a minimum.

### Relocation of utilities into a shared services trench

The network of buried pipes and cables under Albert Street will need to be permanently diverted to enable future construction of the Aotea Station. They will be relocated into a shared services trench in the adjacent footpath.

### Construction effects

Mitigation measures will be in place to manage construction noise, vibration and dust. Ongoing monitoring and consultation will continue throughout the works.

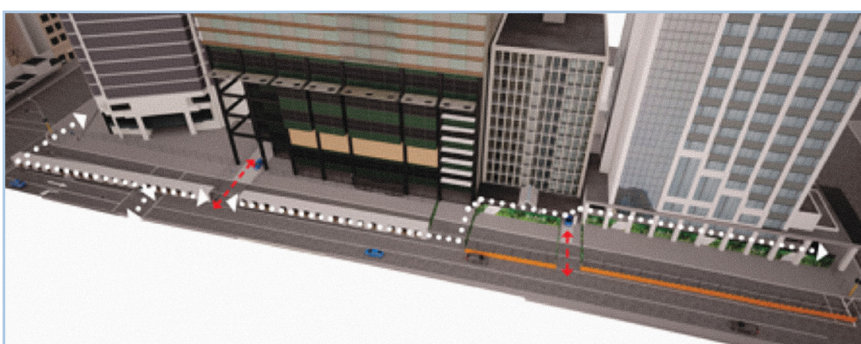


Figure 1. Site layout, temporary pedestrian pathways, hoardings

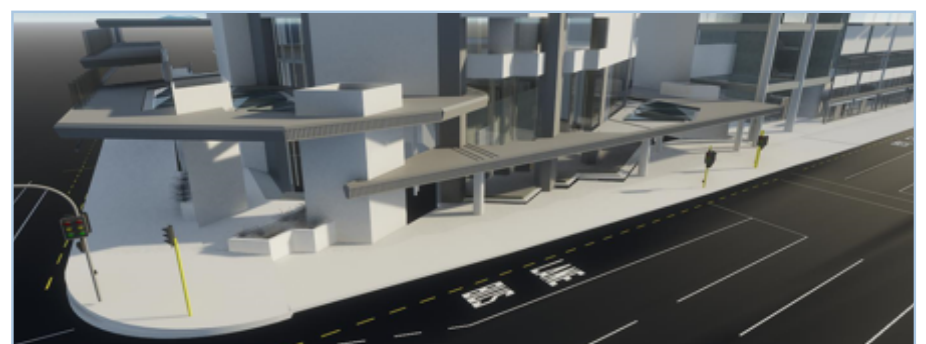


Figure 2. Artist's impression of Wellesley St corner cut back canopy



Figure 3. Artistic impression of container walkway



Figure 4. Artist's impression of Victoria St cut back canopy